

# Quick Tips.

## SMOOTH PEARL APPLICATION GUIDE

Scuffmaster

PRETTY. TOUGH. PAINT.

## Finish Overview

Smooth Pearl is a pearlescent finish that consists of (a) a base color coat, (b) a pearl effect coat and (c) a protective clear coat.

- › **BASE COLOR (a):** MasterCoat 100 provides the base color for every Smooth Pearl finish. It must be spray applied following the directions on the can label. Airless equipment recommended for this step only.
- › **EFFECT COAT (b):** Clear Pearl Coat applied over the base coat is what gives Smooth Pearl its unique shimmering effect. Clear Pearl Coat **MUST** be spray applied using conventional spray equipment, HVLP or hybrid.
- › **CLEAR COAT (b):** Ultra Clear clear coat seals the surface and protects the Pearl Coat. It is available in three sheens, flat, satin and gloss. Ultra Clear must be spray applied using conventional spray equipment, HVLP or Hybrid.

## Masterlink Additive

Masterlink™ is a performance additive that is added to all three coats of the Smooth Pearl finish. Masterlink increases the stain resistance and durability of the finish. Failure to add 2 ounces of Masterlink per gallon will result in a finish that is not as durable as published and will void the warranty.

- › **NOTE:** Product life once Masterlink has been added: 36 hours, 8 hours under pressure.
- › Wait to add Masterlink to each Scuffmaster product until immediately prior to its application. Mix thoroughly. Strain.

## Application / Base Coat

After adding Masterlink, MasterCoat 100 is spray applied like most regular paints using conventional, HVLP or Airless (recommended) equipment.

- › **NOTE:** If needed, thin with water in 2oz increments, max amount 4oz per gallon.
- › Prior to application, box all cans/pails of the same color together.
- › **AIRLESS SETTINGS:** Pressure–2000psi. Tip– .015”-.021”

## Application / Clear Pearl Coat

**REQUIRED MATERIALS:** To ensure a proper match, please follow the steps in this guide and be sure your setup is correct.

- › **CONVENTIONAL:** BINKS® 2100 - 63 PB External Mix Air Cap • 66 SS Fluid Nozzle • 565 Needle • 2-gal. pressure pot
- HVLP:** Graco 4900 ProComp™ • 4-stage Turbine • #3 Needle/Nozzle Setup or comparable equipment
- HYBRID:** BINKS® Mach 1 - 94P Air Cap • 97 Fluid nozzle • 2-gallon pressure pot or comparable equipment
- COMPRESSOR:** Minimum 6.5 cfm at 90 psi

## Conventional & Hybrid Setup

**IMPORTANT:** Make sure you have a control sample before spraying this portion of the finish. Applying too much Clear Pearl Coat will shift color and result in an unacceptable color match.

- › 1. Add Masterlink and mix Clear Pearl Coat following the directions found in the Preparation section on the following page.
- 2. Remove air cap and set fluid and air pressure to zero (0).
- 3. Increase FLUID pressure to produce a 2-3 inch stream of paint before it begins to arch (see Preparation section).
- 4. Replace the air cap and add AIR pressure until perfect atomization is achieved.

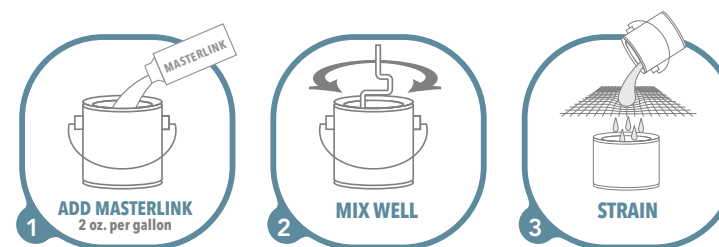
**CAUTION:** Any "spitting" in the Pearl Coat spray fan may result in an unacceptable finish!

## HVLP Setup

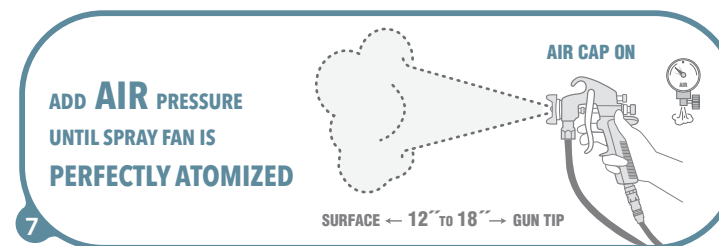
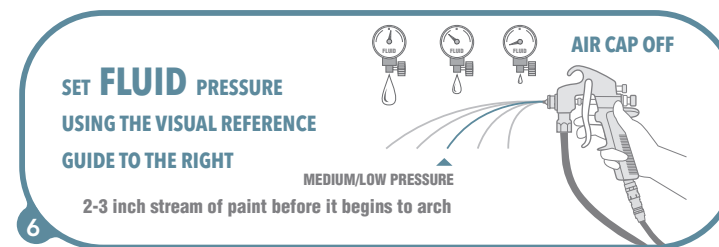
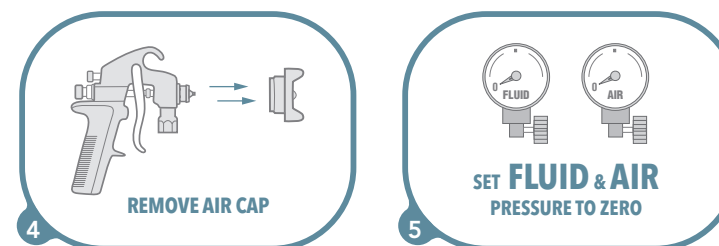
- › 1. Add Masterlink and mix Clear Pearl Coat following the directions found in the Preparation section on the following page.
- 2. Set fan adjustment as wide as possible.
- 3. Use highest air setting.
- 4. The trigger should start wide open. IF MATERIAL IS NOT ATOMIZED, ADJUST TRIGGER TO RESTRICT MATERIAL FLOW! MAY NEED THINNING! 4 oz. WATER MAX!
- 5. If using an HVLP with a pressure pot, set fluid pressure to produce a 2-3 inch stream of paint before it begins to arch.

## Preparation

**IMPORTANT:** Be sure surface is as smooth as possible before application! All approved samples have a sprayed base coat below the Clear Pearl Coat! Spray primer and base coat then follow these steps to apply Clear Pearl Coat.

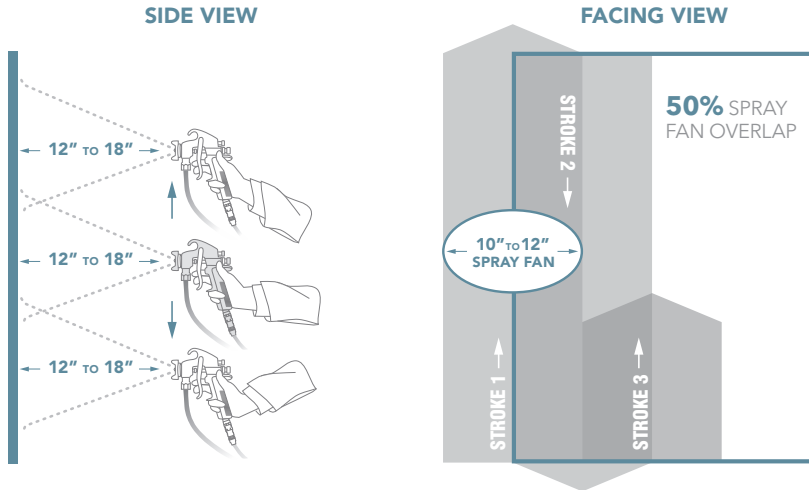


**PRODUCT LIFE ONCE MASTERLINK HAS BEEN ADDED: 36 HOURS - 8 HOURS UNDER PRESSURE**



## Application Technique

**IMPORTANT:** Read the troubleshooting section before spraying Pearlcoat. MC100 provides the primary color for this finish. **DO NOT OVER APPLY PEARLCOAT.** The finish will become too light and will require starting over from the base coat.



**KEEP GUN LEVEL AT ALL TIMES!**

**DO NOT SPRAY WITH A WET EDGE!**  
 SPRAY 1-2 DUST COATS. DO NOT OVER APPLY!

### SPRAY GUN POSITION

Position the spray gun approximately 12-18 inches from the surface to be painted. Keep spray gun level at all times.

### SPRAY STROKE RANGE

Begin each stroke a few inches before the edge of the surface. Move in one continuous vertical direction until the other edge is reached. Release the trigger and continue the motion for a few inches past the edge. Repeat process for the return stroke.

### SPRAY FAN OVERLAP

Overlap each spray stroke by 50%. Spray in dust coats. Do not spray with a wet edge. The spray stroke should be fast enough that a wet edge does not develop.

### NUMBER OF PASSES

1 to 2 dust coats should be sufficient. Prior to second dust coat, compare surface to the control sample. If surface is darker than the sample, apply another dust coat. If surface is lighter, see troubleshooting. If it's a perfect match, apply Ultra Clear.

## Troubleshooting

**IMPORTANT:** Call our support line at 1.800.898.0219 if you are unclear on any step of the application. You'll be helped by an experienced professional painter.

### Surface is Darker than Control Sample:

**Cause:** Not enough Clear Pearl

**Solution:** Apply another dust coat. Be sure to compare surface color to the control sample before applying the Ultra Clear.

### Striping:

**Cause:** Clear Pearl Coat was sprayed with a wet edge, coat too heavy

Reapply MC100 base coat, followed by 1-2 dust coats of Pearl Coat. Do not spray a full, wet coat of Pearl Coat.

### Suede or Cloudy Appearance:

**Cause:** Gun too far from wall

**Solution:** Attempt to apply another light pass. If this doesn't work, it will be necessary to start over with a new base coat.

### Surface is Lighter than Control Sample:

**Cause:** Too much Clear Pearl Coat.

**Solution:** Correcting this usually requires reapplying the base coat and spraying the Clear Pearl Coat in lighter dust coats.

### Dry Spray:

**Cause:** Clear Pearl Coat was applied using too much air pressure

**Solution:** Wait until the Clear Pearl Coat dries then lightly sand the finish smooth and reapply a light coat of the Pearl Coat to mask any burnishing from sanding. Depending on the severity of the dry spray, it may be necessary to start over with the base color coat.