

Quick Tips.

AMBIENT DESIGN APPLICATION GUIDE



Pretty. Tough. Paint.™

Finish Overview

Ambient Design is a unique, two-step finish that consists of (a) a base color coat and (b) a pattern coat.

- › **BASE COLOR (a):** MasterCoat 100 provides the base color for every Ambient Design finish. It must be applied following the directions on the can label. Airless equipment is recommended for this step only.
- › **PATTERN COAT (b):** PremiumCoat 200 provides the pattern coat for Ambient Design. See pages two and three of this guide for detailed instructions on applying PremiumCoat 200.

Masterlink Additive

Masterlink™ is a performance additive that is added to both coats of the Ambient Design finish. Masterlink increases the stain resistance and durability of the finish. Failure to add 2 ounces of Masterlink per gallon will result in a finish that is not as durable as published and will void the warranty.

- › **NOTE:** Product life once Masterlink has been added:
36 hours, 8 hours under pressure.
- › Wait to add Masterlink to each Scuffmaster product until immediately prior to its application. Mix thoroughly. Strain.

Application / Base Coat

After adding Masterlink, MasterCoat 100 can be spray applied like most regular paints using conventional, HVLP or Airless (recommended) equipment.

- › **NOTE:** If needed, thin MasterCoat 100 with water in 2oz increments, max amount 4oz per gallon.
- › Prior to application, box all cans/pails of the same color together.
- › **AIRLESS SETTINGS:** Pressure—2000psi. Tip— .015"—.021"

Application / Pattern Coat

IMPORTANT: To ensure a proper match, please follow the steps in this guide and be sure your setup is correct. **The pattern coat must be applied within 48 hours of applying the base coat.**

- > **SPRAY GUN:** BINKS® 2100 • 66 SS Fluid Nozzle • 565 Needle
 - Scuffmaster Solo™ Air Cap (threaded to fit the Binks 2100)
- PRESSURE POT:** Dual regulated • Two Gallon Pressure Pot
- COMPRESSOR:** Minimum 6.5 cfm at 90 psi

Adjusting the Speck Size of the Pattern Coat To Match the Control Sample

Adjustments to the air pressure setting will allow the applicator to control the size of the specks in the pattern coat. Be sure to reference the control sample to determine the desired speck size.



TO DECREASE SPECK SIZE:

Slowly **INCREASE** the air pressure until desired speck size is achieved. **DO NOT ATOMIZE!**

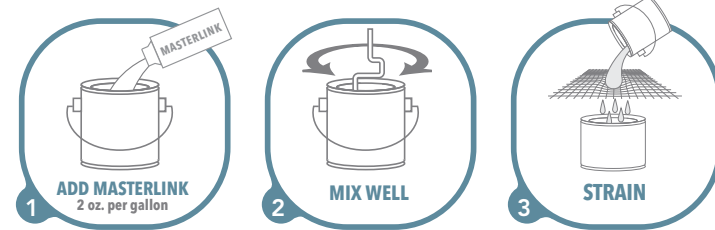


TO INCREASE SPECK SIZE:

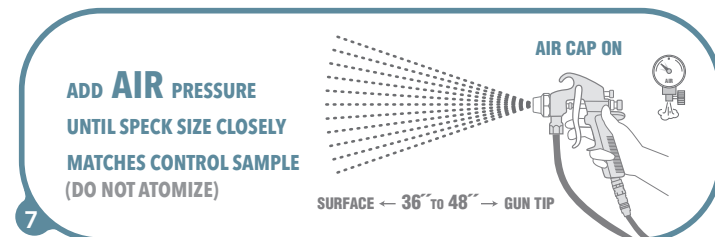
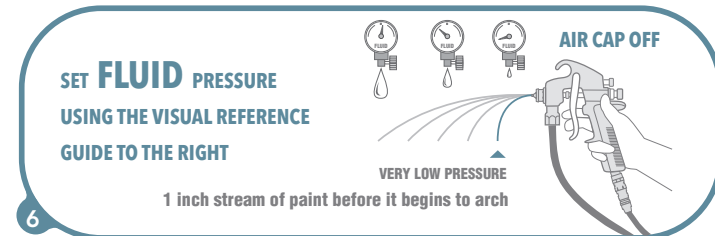
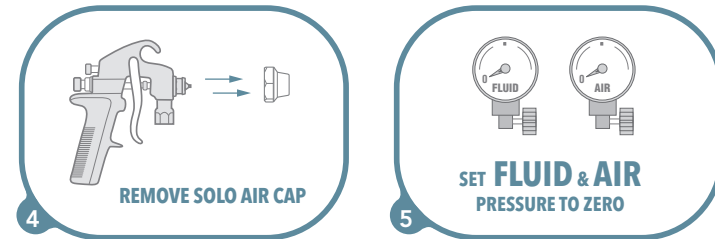
Slowly **DECREASE** the air pressure until desired speck size is achieved.

Preparation

Brush, roll or spray the base coat (base coat on all samples was sprayed), then follow these steps to apply the pattern coat. **NOTE: When applying 2 or more pattern colors, begin with the color that most contrasts the base color!**

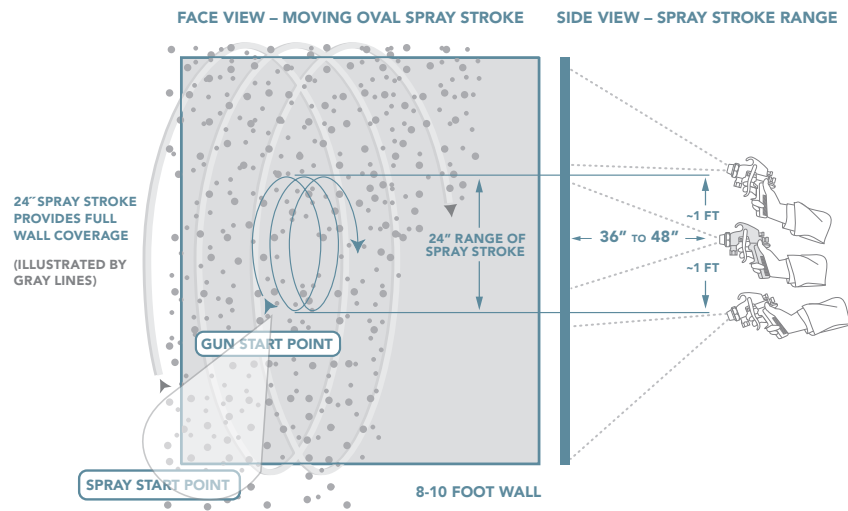


PRODUCT LIFE ONCE MASTERLINK HAS BEEN ADDED: 36 HOURS - 8 HOURS UNDER PRESSURE



Application Technique

IMPORTANT: Bleed pressure off **AWAY FROM SUBSTRATE** before moving into spray stroke, **KEEP GUN TRIGGERED!**



SPRAY GUN POSITION

Position the spray gun approximately 36-48 inches from the surface to be painted. This will create a wide spray fan which will help avoid striping. The gun should be positioned about shoulder height. If the pressure has been set correctly, this is the perfect location for coverage of an 8-10 foot surface.

SPRAY STROKE RANGE

Stay within a 24" spray stroke range. Tilt wrist up or down at the top and bottom of the stroke to reach the edges. To keep pressure from fluctuating, avoid whipping or snapping the gun and keep the fluid/air line bundle at your hip in your free hand.

SPRAY STROKE MOTION

Move the spray gun up and down in a smooth, even motion. Move your arm in a spiraling oval pattern similar to a football staying within the 24" spray stroke range.

WORK QUICKLY

Move down the wall in one direction at a comfortable pace. We recommend building up the finish of each pattern color in two passes. Visually reference the control sample and adjust your pace to achieve the desired finish in two passes. Moving too slowly will cause the finish to build up too quickly which may cause striping.

Troubleshooting

IMPORTANT: Call our support line at 1.800.898.0219 if you are unclear on any step of the application. You'll be helped by an experienced professional painter.

Striping:

Cause 1: Spray gun too close to the surface

Cause 2: Spray stroke too slow

Solution: If minor striping occurs in the first pass, the second pass will even out the finish. Focus on the light areas and spray faster over the heavy areas to blend the striping. If striping is severe, allow the pattern to dry then recoat with the base coat and apply the pattern correctly.

Note: If striping occurs, it is typically more visible when viewed from an angle. Before determining a finish complete, look at the same surface from multiple angles.

Blotchy/cloudy Appearance:

Cause 1: Too much air pressure, product is atomizing

Cause 2: Wrong spray stroke, not using full vertical range

Cause 3: Moving too slowly

Solution: If caught early in the application, it should be possible to even out the finish by spraying a second light pass correctly. However, if it is too severe, the only way to fix the finish is to reapply the base coat and apply the pattern correctly.

Note: This issue is typically more visible when viewed from an angle. Before determining a finish complete, look at the same surface from multiple angles.

Pattern Too Light:

Cause 1: Not enough material applied

Solution: Apply another light pass of the pattern coat.

Pattern Too Dense:

Cause 1: Too much material applied

Solution: Reapply the base coat then apply the pattern coat using two light passes.