

ENVIROMETAL PAINT

TROUBLESHOOTING

Scuffmaster

Pretty. Tough. Paint.

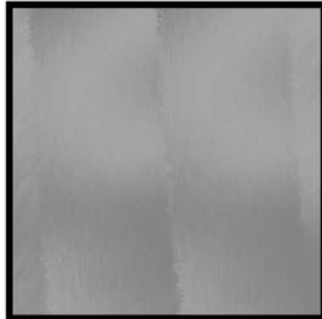
INTRODUCTION

OVERVIEW: It can be helpful to know what not to do when applying a patterned finish for the first time.

READ PRIOR TO BEGINNING APPLICATION

ROLLING APPLICATION: BRUSH STROKES VISIBLE THROUGH ROLLED FINISH

1



BRUSH STROKES VISIBLE THROUGH ROLLED FINISH

CAUSE 1: Didn't roll as close to the masking as possible.

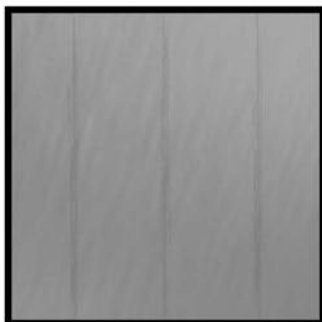
CAUSE 2: Not enough paint on the roller.

SOLUTION #1: Use the 4" roller.

SOLUTION #2: Coat the entire roller, but not so much that it drips excessively.

ROLLING APPLICATION: STRIPING

2



STRIPING

CAUSE 1: Over rolled with Polar Bear™ Set-up.

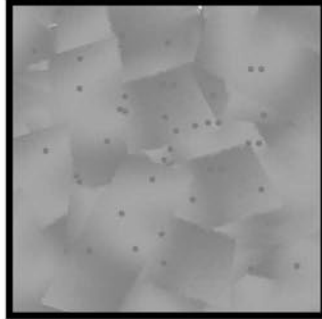
CAUSE 2: Not enough paint on the roller.

SOLUTION #1: Roll over area only once or twice.

SOLUTION #2: Coat the entire roller, but not so much that it drips excessively.

BRUSHED APPLICATION: VISIBLE TEXTURE

3



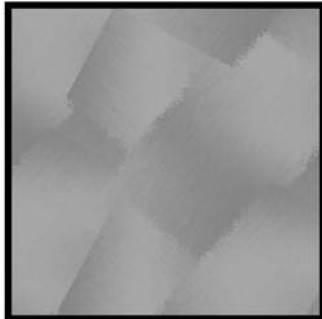
TEXTURE OF WALL VISIBLE THROUGH FINISH

CAUSE 1: Simply rolled first coat. Did not brush.

SOLUTION #1: Sand as smooth as possible to remove stipple.

BRUSHED APPLICATION: BASKET WEAVE OR NOTICEABLE PATTERN

4



BASKET WEAVE OR NOTICEABLE PATTERN

CAUSE 1: Deliberate brush strokes.

SOLUTION #1: Apply random criss-crosses with paint to break-up noticeable pattern.